



HYDRA

**WOW**  
WET ON WET TECHNOLOGY

**Wow® Clear S** is a transparent base specifically designed to be pigmented.

Totally suitable for Virus Mixing System.

**WOW®** technology allows printing wet on wet both half tones and "vector prints" avoiding intermediate flash unit.

As all the other products of the **WOW®** range also

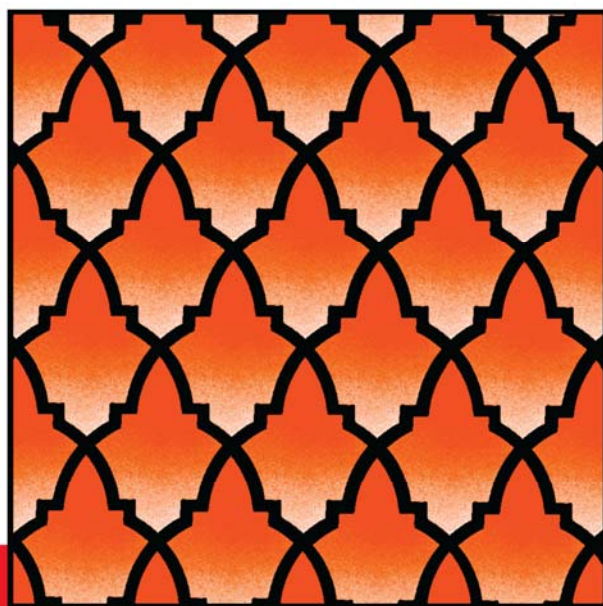
**WOW® CLEAR S** can be printed at 120/305 mesh counts.

For "vector prints" we specifically recommend 90/230 mesh count.

**WOW®** is an ink at high technological content, easy to use and it doesn't clog the screen.

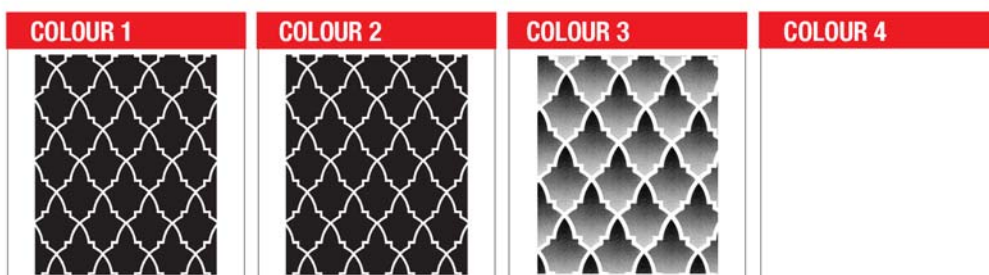
Totally suitable with HYDRA WHITE 120 SOFT.

# WOW® CLEAR S



## technical sheet

COLOUR 1 - RECIPE	RATIO	SCREEN	COLOUR 2 - RECIPE	RATIO	SCREEN
HYDRA WHITE 120 SOFT	100	120/305	HYDRA WHITE 120 SOFT	100	48/123
		GEL 3			GEL 3
		STANDARD			STANDARD
		<b>SQUEEGEE</b>			<b>SQUEEGEE</b>
		75-90-75			65-90-65
COLOUR 3 - RECIPE	RATIO	SCREEN	COLOUR 4 - RECIPE	RATIO	SCREEN
WOW CLEAR S	95	120/305			
AQUATINT PIGMENT ORANGE	5	VIRUS GEL 3			
		STANDARD			
		<b>SQUEEGEE</b>			<b>SQUEEGEE</b>
		85 SHORE			
PRINTER PARAMETERS	PRINTING PROCEDURE		SUITABLE ADDITIVES		
DRYER TEMPERATURE	160°C - 320°F	1	<b>SPECIAL RETARDER:</b>		
CURING TIME	1,5 MIN	2	Retarder designed to further improve HYDRA, GEO and PERFETTO screen ink stability.		
SQUEEGEE ANGLE	20°	3	Add 3-5% of SPECIAL RETARDER to the inks.		
PRINTING SPEED	MEDIUM		<b>Formaldehyde and phthalate free.</b>		
SCREEN CLEAN UP			<b>HYDRA REDUCER 120:</b>		
USE WATER			To reduce viscosity, just add 3% of HYDRA REDUCER 120.		
COMMENTS			<b>Formaldehyde and phthalate free.</b>		
			<b>UNIFIX LC:</b>		
			Additive specifically designed to ensure the proper resistance to frequent washings at high temperatures.		
			up to 3% to be thoroughly mixed with the ink		
			Phthalates and formaldehyde free		
			<b>Formaldehyde and phthalate free.</b>		



JULY 2021





**HYDRA**  
**WOW**  
WET ON WET TECHNOLOGY

**Wow® Clear S** is a transparent base specifically designed to be pigmented.

Totally suitable for Virus Mixing System.

**WOW®** technology allows printing wet on wet both half tones and "vector prints" avoiding intermediate flash unit.

As all the other products of the **WOW®** range also

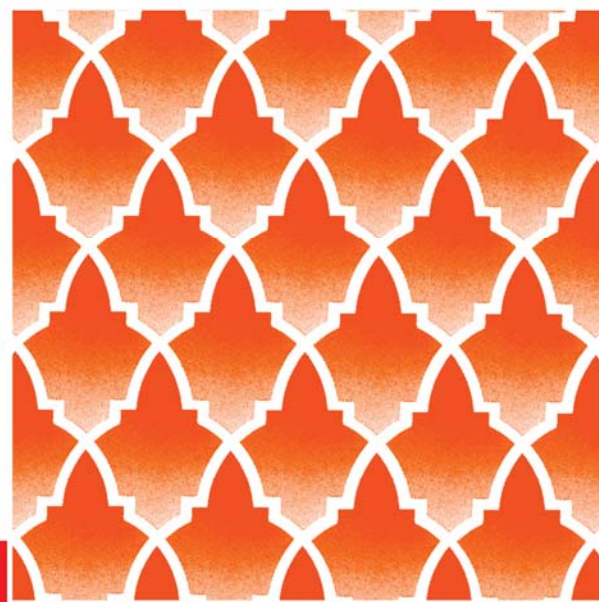
**WOW® CLEAR S** can be printed at 120/305 mesh counts.

For "vector prints" we specifically recommend 90/230 mesh count.

**WOW®** is an ink at high technological content, easy to use and it doesn't clog the screen.

Totally suitable with HYDRA WHITE 120 SOFT.

# WOW® CLEAR S



## technical sheet

COLOUR 1 - RECIPE	RATIO	SCREEN	COLOUR 2 - RECIPE	RATIO	SCREEN
WOW CLEAR S	95	120/305			
AQUATINT PIGMENT ORANGE	5	GEL 3			
		STANDARD			
		<b>SQUEEGEE</b>			<b>SQUEEGEE</b>
		85 SHORE			
COLOUR 3 - RECIPE	RATIO	SCREEN	COLOUR 4 - RECIPE	RATIO	SCREEN
		<b>SQUEEGEE</b>			<b>SQUEEGEE</b>
PRINTER PARAMETERS	PRINTING PROCEDURE		SUITABLE ADDITIVES		
DRYER TEMPERATURE	160°C - 320°F	1	<b>SPECIAL RETARDER:</b>		
CURING TIME	1,5 MIN		Retarder designed to further improve HYDRA, GEO and PERFETTO screen ink stability.		
SQUEEGEE ANGLE	20°		Add 3-5% of SPECIAL RETARDER to the inks.		
PRINTING SPEED	MEDIUM		<b>Formaldehyde and phthalate free.</b>		
SCREEN CLEAN UP			<b>HYDRA REDUCER 120:</b>		
USE WATER			To reduce viscosity, just add 3% of HYDRA REDUCER 120.		
COMMENTS			<b>Formaldehyde and phthalate free.</b>		

**UNIFIX LC:**  
Additive specifically designed to ensure the proper resistance to frequent washings at high temperatures. up to 3% to be thoroughly mixed with the ink  
Phthalates and formaldehyde free  
**Formaldehyde and phthalate free.**

COLOUR 1	COLOUR 2	COLOUR 3	COLOUR 4

JULY 2021







HYDRA

**WOW**  
WET ON WET TECHNOLOGY

As all the other products of the **WOW**® range also **WOW**® CLEAR S can be printed at 120 mesh counts/cm (305/inch). For "vector prints" we specifically recommend 90 mesh per cm (230/inch). **WOW**® is an ink at high technological content, easy to use and it doesn't clog the screen. To print on synthetic garment we recommend to use specific under-base inks: Perfetto White has been specifically designed to print on polyester. Used as white under-base it assures an extraordinary resistance to washing and crocking tests.

In case of garment dye migration, we recommend to print VIRUS NO -SUBLIMATION

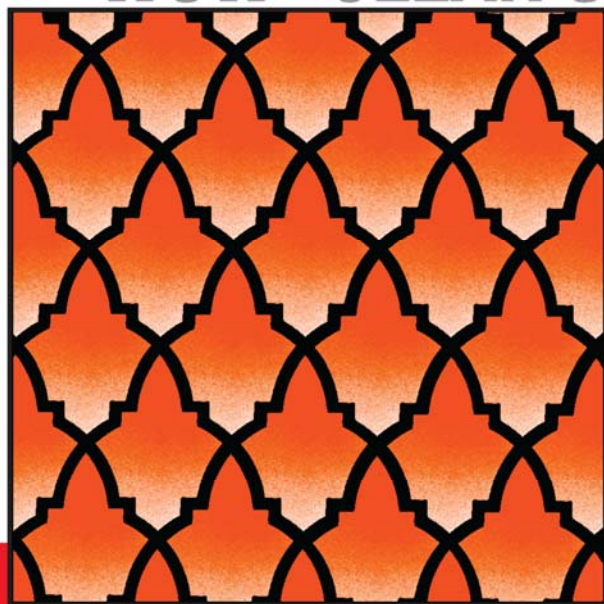
BASE as first under-base that not only assures an excellent elasticity, but even improves the print durability and gives a smoother finish to the print.

**WOW CLEAR S** is a transparent base to be pigmented.

Totally suitable for Virus Mixing System.

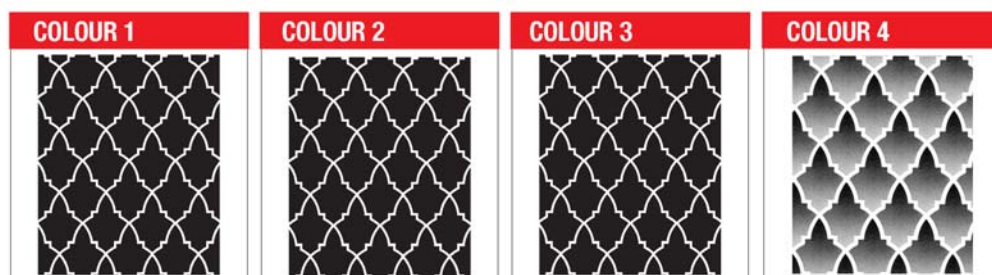
**WOW**® technology allows printing "wet on wet" both half tones and "vector prints" avoiding intermediate flash units.

**WOW® CLEAR S**



## FOR POLYESTER technical sheet

COLOUR 1 - RECIPE	RATIO	SCREEN	COLOUR 2 - RECIPE	RATIO	SCREEN
NO-SUBLIMATION BASE	97	48/123	PERFETTO WHITE	100	48/123
SPECIAL RETARDER	3	GEL 3			GEL 3
		STANDARD			STANDARD
		<b>SQUEEGEE</b>			<b>SQUEEGEE</b>
		65-90-65			65-90-65
COLOUR 3 - RECIPE	RATIO	SCREEN	COLOUR 4 - RECIPE	RATIO	SCREEN
PERFETTO WHITE	100	62/156	WOW CLEAR S	95	120/305
		GEL 3	AQUATINT PIGMENT ORANGE	5	GEL 3
		STANDARD			STANDARD
		<b>SQUEEGEE</b>			<b>SQUEEGEE</b>
		65-90-65			75-90-75
PRINTER PARAMETERS	PRINTING PROCEDURE		SUITABLE ADDITIVES		
DRYER TEMPERATURE	160°C - 320°F	1	<b>SPECIAL RETARDER:</b>		
CURING TIME	2 MIN	2	Retarder designed to further improve HYDRA, GEO and PERFETTO screen ink stability.		
SQUEEGEE ANGLE	25°	3	Add 3-5% of SPECIAL RETARDER to the inks.		
PRINTING SPEED	MEDIUM	4	<b>Formaldehyde and phthalate free.</b>		
SCREEN CLEAN UP			<b>UNIFIX LC:</b>		
USE WATER			Additive specifically designed to ensure the proper resistance to frequent washings at high temperatures.		
COMMENTS			up to 3% to be thoroughly mixed with the ink		
			Phthalates and formaldehyde free		
			<b>Formaldehyde and phthalate free.</b>		



JULY 2021

