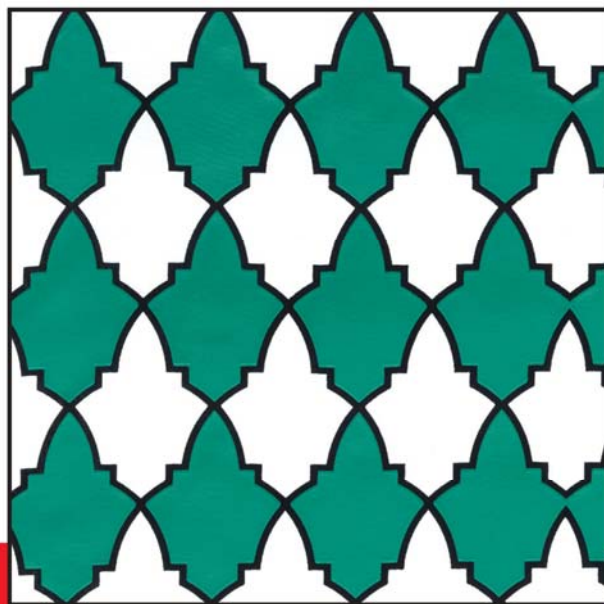




HYDRA

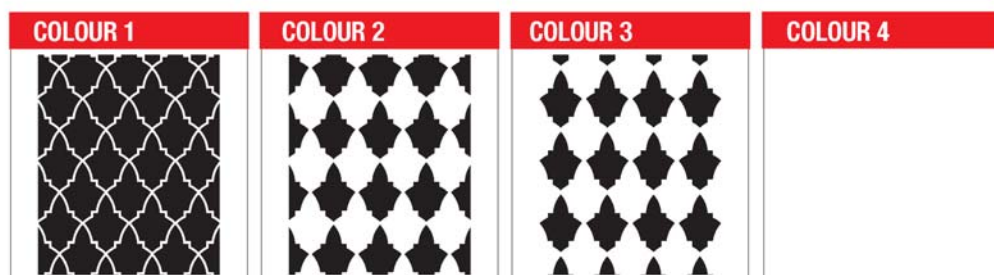
Hydra Elastic Clear 305 Very elastic clear base.
To print on dark garment use Geo Bungee Jumping White as underbase.
- Mesh counts up to: 77 (195).
- 48s (123) suggested.

HYDRA ELASTIC CLEAR 305



technical sheet

COLOUR 1 - RECIPE	RATIO	SCREEN	COLOUR 2 - RECIPE	RATIO	SCREEN
GEO BUNGEE JUMPING WHITE	100	48/123	GEO BUNGEE JUMPING WHITE	100	48/123
		GEL 3			GEL 3
		STANDARD			STANDARD
		SQUEEGEE			SQUEEGEE
		60 SHORE			60 SHORE
COLOUR 3 - RECIPE	RATIO	SCREEN	COLOUR 4 - RECIPE	RATIO	SCREEN
HYDRA ELASTIC CLEAR 305	95	62/156			
AQUATINT PIGMENT GREEN	5	GEL 3			
		STANDARD			
		SQUEEGEE			SQUEEGEE
		65/90/65			
PRINTER PARAMETERS	PRINTING PROCEDURE		SUITABLE ADDITIVES		
DRYER TEMPERATURE	160°C - 320°F	1	SPECIAL RETARDER: Retarder designed to further improve HYDRA, GEO and PERFETTO screen ink stability. Add 3-5% of SPECIAL RETARDER to the inks. Formaldehyde and phthalate free.		
CURING TIME	2 MIN	2	HYDRA REDUCER 120: To reduce viscosity, just add 3% of HYDRA REDUCER 120. Formaldehyde and phthalate free.		
SQUEEGEE ANGLE	25°	3	HYDRA JET REDUCER: Viscosity reducer; add 1-3% to the ink. To use only when the ink viscosity is extremely thick. Formaldehyde and phthalate free.		
PRINTING SPEED	MEDIUM		HYDRA SPECIAL FIXER: special fixer to be mixed with ink (5-10%). Consistently improves the washing fastness without affecting ink flexibility. Formaldehyde and phthalate free.		
SCREEN CLEAN UP					
USE WATER					
COMMENTS					



JULY 2021

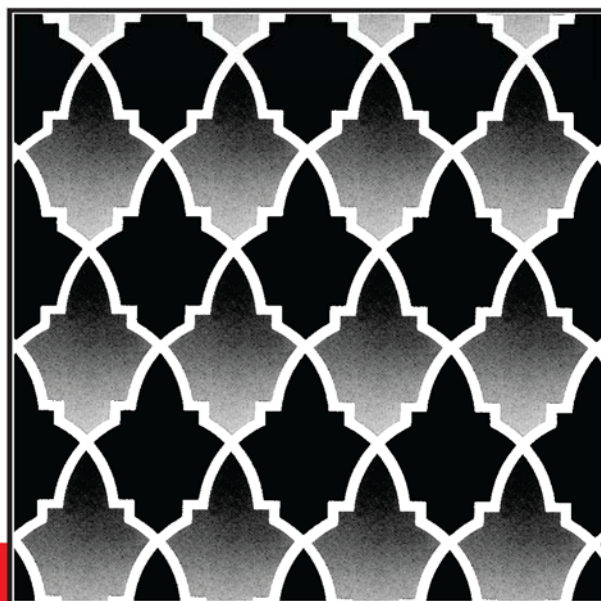




GEO NYLONE CLEAR

Geo Nylone Clear is a water based ink formaldehyde, phthalate and PVC free designed to be applied onto all those garments difficult to be printed such as nylon, technical fabrics and synthetic fabrics in general. Recommended mesh counts from 48 (123) to 77 (195); GEO NYLONE CLEAR polymerizes at 150°C. Adding 1-3% HI-ACTIVATOR increases resistance and durability allowing the ink to air dry at environmental temperature within 48 hours.

For garments sensitive to high temperatures, we suggest to consider the following procedures: when curing at 120°C add to NYLONE CLEAR 3% of UniFix LC; when curing at 90°C add at NYLONE CLEAR from 1 to 3% of Hi Activator.



technical sheet

COLOUR 1 - RECIPE	RATIO	SCREEN	COLOUR 2 - RECIPE	RATIO	SCREEN
GEO NYLONE CLEAR	94	48/123	GEO NYLONE CLEAR	94	77/195
AQUATINT PIGMENT BLACK B	6	GEL 3	AQUATINT PIGMENT BLACK B	6	GEL 3
		STANDARD			STANDARD
		SQUEEGEE			SQUEEGEE
		65/90/65			75/90/75
COLOUR 3 - RECIPE	RATIO	SCREEN	COLOUR 4 - RECIPE	RATIO	TELAIO
		SQUEEGEE			SQUEEGEE
PRINTER PARAMETERS	PRINTING PROCEDURE		SUITABLE ADDITIVES		
DRYER TEMPERATURE	150°C - 305°F	1	SPECIAL RETARDER:		
CURING TIME	2 MIN	2	Retarder designed to further improve HYDRA, GEO and PERFETTO screen ink stability.		
SQUEEGEE ANGLE	25°		Add 3-5% of SPECIAL RETARDER to the inks.		
PRINTING SPEED	MEDIUM		Formaldehyde and phthalate free.		
SCREEN CLEAN UP			UNIFIX LC:		
USE WATER			Additive specifically designed to ensure the proper resistance to frequent washings at high temperatures.		
COMMENTS			up to 3% to be thoroughly mixed with the ink		
			Phthalates and formaldehyde free		
			Formaldehyde and phthalate free.		

HI ACTIVATOR:

To be mixed to the ink to further improve printing durability or to cure the ink without passing the garment through the dryer. In both cases case full curing will occur in 48 hours.
Formaldehyde and phthalate free.

COLOUR 1	COLOUR 2	COLOUR 3	COLOUR 4

JULY 2021





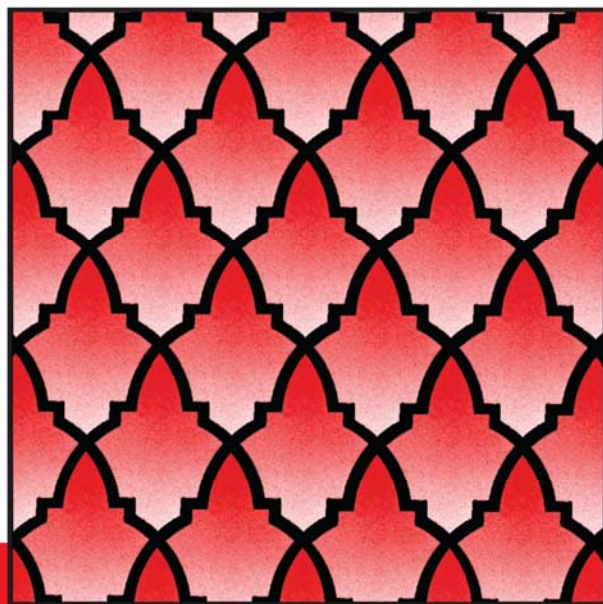
PERFETTO

Perfetto Clear has been specifically designed to print on polyester, but it's also able to express its **full potential on every other kind of fabric.**

In case of garment dye migration, we recommend to print a VIRUS NO SUBLIMATION BASE as under-base that not only assures an excellent elasticity, but even improves the print durability and gives a smoother finish to the print.

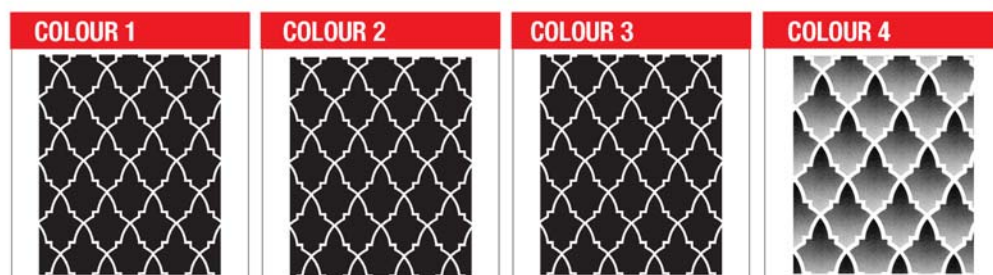
PERFETTO also assures an extraordinary resistance to washing and crocking tests, proving to be more resistant than what is required by the most severe standards.

PERFETTO CLEAR



technical sheet

COLOUR 1 - RECIPE	RATIO	SCREEN	COLOUR 2 - RECIPE	RATIO	SCREEN
NO-SUBLIMATION BASE	97	48/123	PERFETTO WHITE	100	48/123
SPECIAL RETARDER	3	GEL 3			GEL 3
		STANDARD			STANDARD
		SQUEEGEE			SQUEEGEE
		65-90-65			65-90-65
COLOUR 3 - RECIPE	RATIO	SCREEN	COLOUR 4 - RECIPE	RATIO	SCREEN
PERFETTO WHITE	100	62/156	PERFETTO CLEAR	95	120/305
		GEL 3	AQUATINT PIGMENT RED D	5	GEL 3
		STANDARD			STANDARD
		SQUEEGEE			SQUEEGEE
		65-90-65			75-90-75
PRINTER PARAMETERS	PRINTING PROCEDURE		SUITABLE ADDITIVES		
DRYER TEMPERATURE	160°C - 320°F	1	SPECIAL RETARDER:		
CURING TIME	2 MIN	2	Retarder designed to further improve HYDRA, GEO and PERFETTO screen ink stability.		
SQUEEGEE ANGLE	25°	3	Add 3-5% of SPECIAL RETARDER to the inks.		
PRINTING SPEED	MEDIUM	4	Formaldehyde and phthalate free.		
SCREEN CLEAN UP			UNIFIX LC:		
USE WATER			Additive specifically designed to ensure the proper resistance to frequent washings at high temperatures.		
COMMENTS			up to 3% to be thoroughly mixed with the ink		
			Phthalates and formaldehyde free		
			Formaldehyde and phthalate free.		



JULY 2021





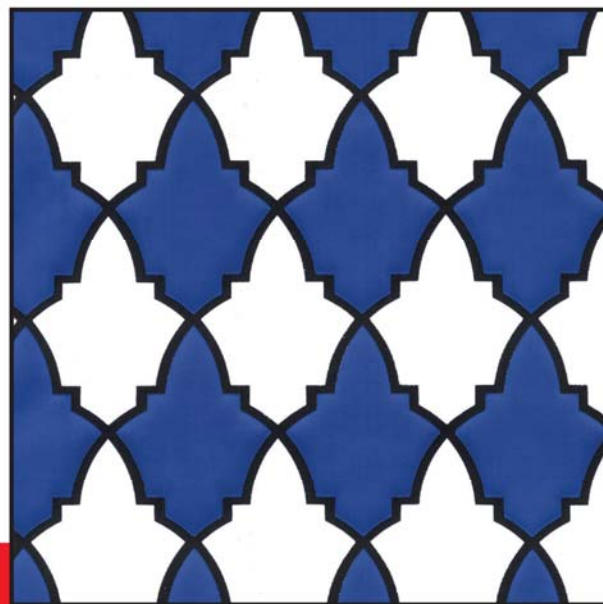
PERFETTO

Perfetto Cool Base A semi-opaque Base was missing in order to complete the already extraordinary well known performances of Perfetto range.

Perfetto Cool Base is more opaque and has a greater matt finishing, nevertheless is perfectly compatible with the formulae proposed by Virus Mixing System.

Perfetto Cool Base ensures vibrant bright colors, the same achievable with a transparent base.

PERFETTO COOL BASE



technical sheet

COLOUR 1 - RECIPE	RATIO	SCREEN	COLOUR 2 - RECIPE	RATIO	SCREEN
NO-SUBLIMATION BASE	97	48/123	PERFETTO WHITE	100	48/123
SPECIAL RETARDER	3	GEL 3			GEL 3
		STANDARD			STANDARD
		SQUEEGEE			SQUEEGEE
		65-90-65			65-90-65
COLOUR 3 - RECIPE	RATIO	SCREEN	COLOUR 4 - RECIPE	RATIO	SCREEN
PERFETTO WHITE	100	62/156	PERFETTO COOL BASE	95	62/156
		GEL 3	AQUATINT PIGMENT BLUE A	5	GEL 3
		STANDARD			STANDARD
		SQUEEGEE			SQUEEGEE
		65-90-65			65-90-65

PRINTER PARAMETERS	PRINTING PROCEDURE	SUITABLE ADDITIVES
DRYER TEMPERATURE	160°C - 320°F	1
CURING TIME	2 MIN	2
SQUEEGEE ANGLE	25°	3
PRINTING SPEED	MEDIUM	4
SCREEN CLEAN UP		
USE WATER		
COMMENTS		

IN CASE OF MORE SUBSTANTIAL BLEEDING OF THE SUBSTRATE, JUST PRINT DOUBLE LAYER OF NO SUBLIMATION.

SPECIAL RETARDER:

Retarder designed to further improve HYDRA, GEO and PERFETTO screen ink stability.

Add 3-5% of SPECIAL RETARDER to the inks.

Formaldehyde and phthalate free.

HYDRA JET REDUCER:

Viscosity reducer; add 1-3% to the ink.

To use only when the ink viscosity is extremely thick.

Formaldehyde and phthalate free.

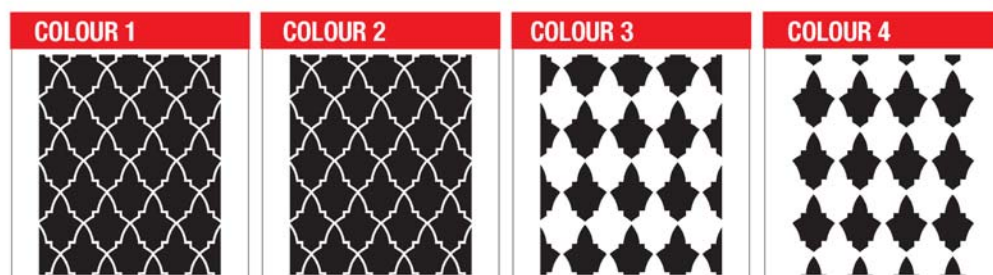
UNIFIX LC:

Additive specifically designed to ensure the proper resistance to frequent washings at high temperatures.

up to 3% to be thoroughly mixed with the ink

Phthalates and formaldehyde free

Formaldehyde and phthalate free.



JULY 2021





HYDRA SOFT CLEAR BASE

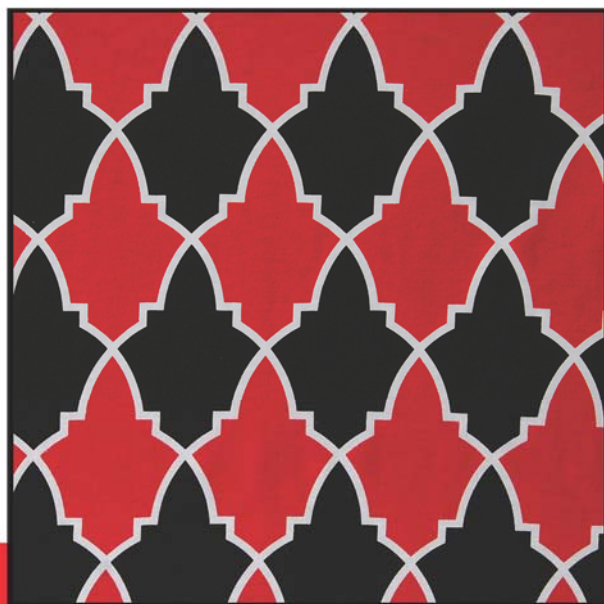
HYDRA

Hydra Soft Clear Base Extremely soft transparent base.

Ideal for light colour garments.

- Screen up to 77 (195) mesh counts. 48s (123) suggested.

- To reduce viscosity, just add 3% of REDUCER 77.



technical sheet

COLOUR 1 - RECIPE	RATIO	SCREEN	COLOUR 2 - RECIPE	RATIO	SCREEN
HYDRA SOFT CLEAR BASE	95	77/195	HYDRA SOFT CLEAR BASE	95	77/195
AQUATINT PIGMENT RED C	5	GEL 3	AQUATINT PIGMENT BLACK B	5	GEL 3
		STANDARD			STANDARD
		SQUEEGEE			SQUEEGEE
		65-90-65			65-90-65
COLOUR 3 - RECIPE	RATIO	SCREEN	COLOUR 4 - RECIPE	RATIO	SCREEN
		SQUEEGEE			SQUEEGEE

PRINTER PARAMETERS	PRINTING PROCEDURE	SUITABLE ADDITIVES
DRYER TEMPERATURE	160°C - 320°F	1 PRINT DOUBLE STROKE
CURING TIME	2 MIN	2 PRINT DOUBLE STROKE - CURE
SQUEEGEE ANGLE	20°	
PRINTING SPEED	MEDIUM	
SCREEN CLEAN UP		
USE WATER		
COMMENTS		

PRINT WET ON WET

HYDRA REDUCER 77:

To reduce viscosity, just add 3% of HYDRA REDUCER 77. **Formaldehyde and phthalate free.**

HYDRACRYL RETARDER:

Retarder designed to further improve HYDRA, GEO and PERFETTO screen ink stability. Add 3-5% of HYDRACRYL RETARDER to the inks. **Formaldehyde and phthalate free.**

UNIFIX LC:

Additive specifically designed to ensure the proper resistance to frequent washings at high temperatures. up to 3-5% to be thoroughly mixed with the ink. **Phthalates and formaldehyde free. Formaldehyde and phthalate free.**

COLOUR 1	COLOUR 2	COLOUR 3	COLOUR 4

HYDRA SOFT CLEAR
BASE - 02
JUNE 2018

