



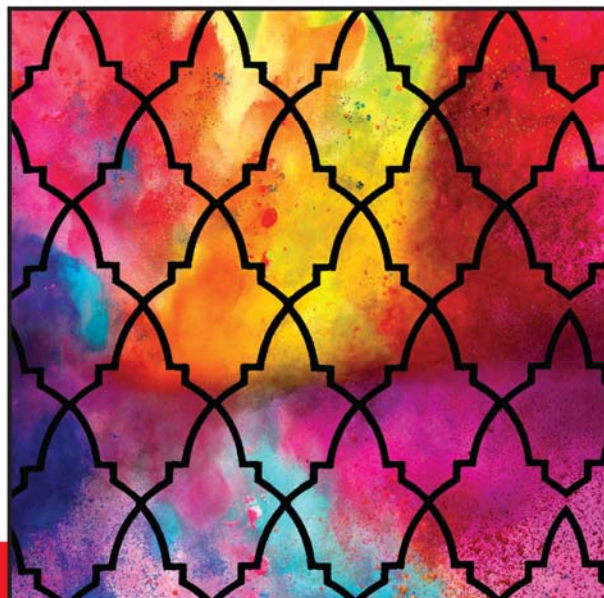
Wow® Process HC range has been developed for 4 colour process printing.

The range is made of 4 ready to use colours formulated with a greater pigments concentration compared to the standard version, specific for dark fabrics that need a white under-base. The formulation of the 4 printing colours and the pureness of the pigments guarantee a perfect balance of the chromatic scale

ensuring final results faithful to the original subjects. The range of colours, created with the revolutionary **WOW®** technology, allows the user to easily print "wet on wet" even on white under bases previously flashed with flash units. **Wow® Process HC** range is printable at 120/tpc (305/ tpi) thus guarantees the optimum softness, quality of details and harmonious colours. It doesn't clog the screen, it's easy to use and doesn't cause dot gain.

4YOU, the online separation service specifically designed for the chromatic features of Virus inks, has been enhanced to take full advantage of the innovative characteristics of **Wow® Process HC** (to know more please visit: www.virusinks.com).

WOW® PROCESS HC



technical sheet

COLOUR 1 - RECIPE	RATIO	SCREEN	COLOUR 2 - RECIPE	RATIO	SCREEN
HYDRA WHITE 120 SOFT	100	120/305	HYDRA WHITE 120 SOFT	100	62/156
		GEL 3			GEL 3
		STANDARD			STANDARD
		SQUEEGEE			SQUEEGEE
		75-90-75			65-90-65
COLOUR 3 - RECIPE	RATIO	SCREEN	COLOUR 4 - RECIPE	RATIO	SCREEN
WOW PROCESS YELLOW HC	100	120/305	WOW PROCESS MAGENTA HC	100	120/305
		GEL 3			GEL 3
		STANDARD			STANDARD
		SQUEEGEE			SQUEEGEE
		85 SHORE			85 SHORE
COLOUR 5 - RECIPE	RATIO	SCREEN	COLOUR 6 - RECIPE	RATIO	SCREEN
WOW PROCESS CYAN HC	100	120/305	WOW PROCESS BLACK HC	100	120/305
		GEL 3			GEL 3
		STANDARD			STANDARD
		SQUEEGEE			SQUEEGEE
		85 SHORE			85 SHORE

PRINTER PARAMETERS	PRINTING PROCEDURE	SUITABLE ADDITIVES
DRYER TEMPERATURE	160°C - 320°F	1 PRINT DOUBLE STROKE - FLASH
CURING TIME	1,5 MIN	2 PRINT DOUBLE STROKE - FLASH
SQUEEGEE ANGLE	20°	3 PRINT DOUBLE STROKE
PRINTING SPEED	MEDIUM	4 PRINT DOUBLE STROKE
SCREEN CLEAN UP	5 PRINT DOUBLE STROKE	5 PRINT DOUBLE STROKE
USE WATER	6 PRINT DOUBLE STROKE - CURE	6 PRINT DOUBLE STROKE - CURE
COMMENTS		

SPECIAL RETARDER:

Retarder designed to further improve HYDRA, GEO and PERFETTO screen ink stability.
Add 3-5% of SPECIAL RETARDER to the inks.
Formaldehyde and phthalate free.

HYDRA REDUCER 120:

To reduce viscosity, just add 3% of HYDRA REDUCER 120.
Formaldehyde and phthalate free.

UNIFIX LC:

Additive specifically designed to ensure the proper resistance to frequent washings at high temperatures. up to 3% to be thoroughly mixed with the ink
Phthalates and formaldehyde free
Formaldehyde and phthalate free.





Wow® Process HC range has been developed for 4 colour process printing. The range is made of 4 ready to use colours formulated with a greater pigments concentration compared to the standard version, specific for dark fabrics that need a white under-base. The formulation of the 4 printing colours and the pureness of the pigments guarantee a perfect balance of the chromatic scale ensuring final results faithful to the original subjects. The range of colours, created with the revolutionary **WOW®** technology, allows the user to easily print "wet on wet" even on white under bases previously flashed with flash units.

Wow® Process HC range is printable at 120/tpc (305/ tpi) thus guarantees the optimum softness, quality of details and harmonious colours. It doesn't clog the screen, it's easy to use and doesn't cause dot gain. 4YOU, the online separation service available on line: www.virusinks.com (services). To print on synthetic garment we recommend to use specific under-base inks: Perfetto White has been specifically designed to print on polyester. Used as white under-base it assures an extraordinary resistance to washing and crocking tests. In case of garment dye migration, we recommend to print VIRUS NO -SUBLIMATION BASE as first under-base that not only assures an excellent elasticity, but even improves the print durability and gives a smoother finish to the print.

WOW® PROCESS HC



FOR POLYESTER technical sheet

COLOUR 1 - RECIPE	RATIO	SCREEN	COLOUR 2 - RECIPE	RATIO	SCREEN
NO-SUBLIMATION BASE	97	48/123	PERFETTO WHITE	100	48/123
SPECIAL RETARDER	3	GEL 3			GEL 3
		STANDARD			STANDARD
		SQUEEGEE			SQUEEGEE
		65-90-65			65-90-65
COLOUR 3 - RECIPE	RATIO	SCREEN	COLOUR 4-5-6-7 RECIPE	RATIO	SCREEN
PERFETTO WHITE	100	62/156	WOW PROCESS YELLOW HC	100	120/305
		GEL 3	WOW PROCESS MAGENTA HC		GEL 3
		STANDARD	WOW PROCESS CYAN HC		STANDARD
		SQUEEGEE	WOW PROCESS BLACK HC		SQUEEGEE
		65-90-65			85 SHORE
COLOUR 8 - RECIPE	RATIO	SCREEN	COLOUR 9 - RECIPE	RATIO	SCREEN

PRINTER PARAMETERS	PRINTING PROCEDURE	SUITABLE ADDITIVES
DRYER TEMPERATURE	160°C - 320°F	1 PRINT DOUBLE STROKE - FLASH
CURING TIME	1,5 MIN	2 PRINT DOUBLE STROKE - FLASH
SQUEEGEE ANGLE	20°	3 PRINT DOUBLE STROKE - FLASH
PRINTING SPEED	MEDIUM	4 PRINT DOUBLE STROKE
SCREEN CLEAN UP	5 PRINT DOUBLE STROKE	5 PRINT DOUBLE STROKE
USE WATER	6 PRINT DOUBLE STROKE	6 PRINT DOUBLE STROKE
COMMENTS	7 PRINT DOUBLE STROKE - CURE	7 PRINT DOUBLE STROKE

SPECIAL RETARDER:

Retarder designed to further improve HYDRA, GEO and PERFETTO screen ink stability. Add 3-5% of SPECIAL RETARDER to the inks. **Formaldehyde and phthalate free.**

HYDRA REDUCER 120:

To reduce viscosity, just add 3% of HYDRA REDUCER 120. **Formaldehyde and phthalate free.**

UNIFIX LC:

Additive specifically designed to ensure the proper resistance to frequent washings at high temperatures. up to 3% to be thoroughly mixed with the ink. **Phthalates and formaldehyde free. Formaldehyde and phthalate free.**

