

THIEME

+ Printing solutions - a class of its own

Application and process development



Why
Thieme?



- +** Support of development departments and research institutes
- +** Platform of the most diverse machine types for printing trials
- +** Many years of expertise in screen and digital printing technology

Thieme is member:



THIEME

+ Printing solutions - a class of its own

Application and process development

Engineering



- + Customised developments for substrate arrangement, e.g. optical alignment by means of CCD cameras
- + Substrate transport such as Pick & Place handling systems, Roll to Roll etc.
- + Project planning of inline and offline system concepts for the most diverse substrates
- + Master computer for system control, status display and composition management of complex system components

Technical Center



- + Performance of printing and drying tests on the most diverse Thieme printing machines
- + Support in development topics and process evaluations
- + Creation of prototypes up to the pilot series

Process Control

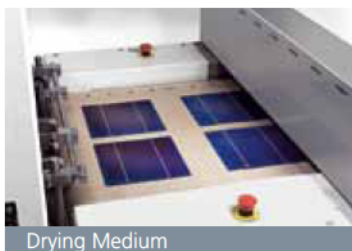


- + Integration of inspection systems for production monitoring
- + Implementation of Static Process Control (SPC) or In Process Control (IPC)
- + Multivariate Process control

Result



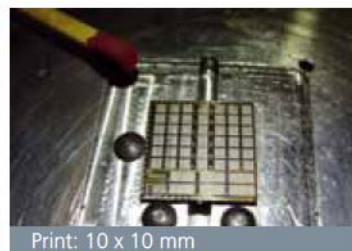
- + Feasibility studies
- + Determination of the process parameters
- + Configuration of the ideal machine components for the series production



Drying Medium



THIEME Squeegee



Print: 10 x 10 mm



Ink dispenser



Camera Alignment



Pick & Place

+ THIEME GmbH & Co. KG

Robert-Bosch-Straße 1
D - 79331 Teningen

Tel. +49 (0) 76 41 583-0
Fax +49 (0) 76 41 583-110
Mail info@thieme.eu

+ THIEME S.A.S.

„Les Scientifiques“
Rue Sébastien Brant
Parc d'Innovation Strasbourg Technopôle
F - 67400 Illkirch-Graffenstaden

Tél. +33 (0) 3 88 55 27 00
Fax +33 (0) 3 88 67 33 13
Mail france@thieme.eu

+ THIEME Corporation

3605 Swenson Avenue
US - St. Charles, IL 60174

Phone +1-630-513-1666
Fax +1-630-513-1999
Mail info@thieme-us.com

www.thieme.eu

www.thieme-us.com